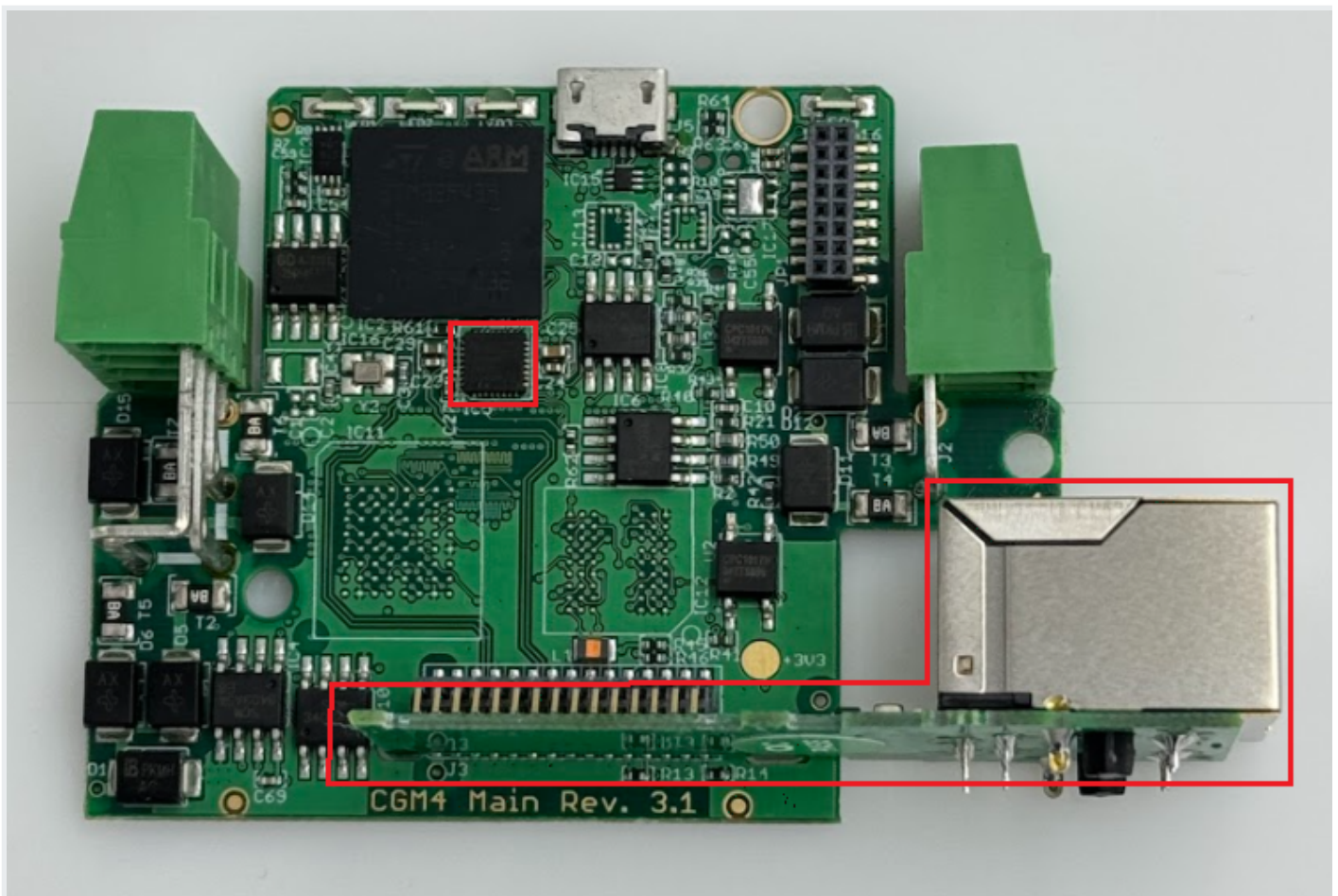


Ethernet

STM32 Open IoT and IIoT Gateways (P10 - P12)

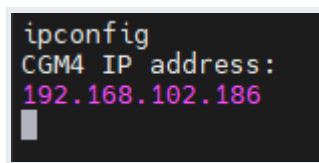
Link to repositories:

- [C](#)



This example allows you to check the Gateway's IP address. Connect the device via USB/UART converter and choose correct COM/ttyUSB port. Remember to connect the IoT Gateway to the network using an Ethernet cable. Type in terminal "ipconfig". If your network connection works

properly, IP address will be displayed as below:

A terminal window with a black background and white text. The first line is 'ipconfig'. The second line is 'CGM4 IP address:'. The third line is '192.168.102.186' in red text. A white cursor is visible on the line following the IP address.

```
ipconfig
CGM4 IP address:
192.168.102.186
█
```

Revision #6

Created 20 June 2024 09:47:41 by Jan Górski

Updated 7 February 2025 12:23:52 by Michał Grabski