

Redisage Configurator

RemoteCOM (C20 - C25)

Redisage Configurator is an app used to emulate connection between converter and a PC as if its RS232/RS485 ports would be connected directly to the COM port. The advantage of that functionality is lack of additional cables. Transmission can be tested over Ethernet. First connect the device to a local network using the Ethernet port and power it up. During the configuration process set “Service” to the RemoteCOM option on the “Ports” page.

While changing port service from RemoteCOM to TCP/UDP Socket make sure to disable RemoteCOM virtual port in the Redisage Configurator first.

The screenshot shows the 'Port Configuration' dialog box in the Redisage Configurator application. The dialog is titled 'Port Configuration' and has a close button (X) in the top right corner. It features a 'Port' toggle switch which is currently turned on. Below the toggle, the port is identified as 'Tx1-Rx1/A1-B1'. The configuration fields are organized into four columns: 'Service' (set to 'RemoteCOM'), 'Port' (set to '1536'), 'Connection Timeout [s]' (set to '0'), and 'Inactivity Time [ms]' (set to '0'). The 'Encryption' section shows 'Disabled' and a password field with a hint 'When encryption enabled type password here' and an eye icon. The 'Termination' section is set to 'Disabled'. The 'Baud Rate' is set to '115200', 'Data Bits' to '8', 'Parity' to 'None', and 'Stop Bits' to '1'. There is a 'Notes' text area at the bottom. At the bottom right of the dialog are 'Cancel' and 'OK' buttons. The background of the application shows the 'Ports' tab selected in the top navigation bar, with other tabs like 'Status', 'Network', 'Device', and 'Info' visible. A 'Help' button is also present in the top right of the application window.

Redisage ELECTRONICS Status Ports Network Device Info

Port ☒ Tx1-Rx1/A1-B1

Service RemoteCOM RemoteCOM

Port 1536

Connection Timeout [s] 0

Inactivity Time [ms] 0

Encryption Disabled Disabled

Password When encryption enabled type password here

Termination Disabled

Baud Rate 115200

Data Bits 8

Parity None

Stop Bits 1

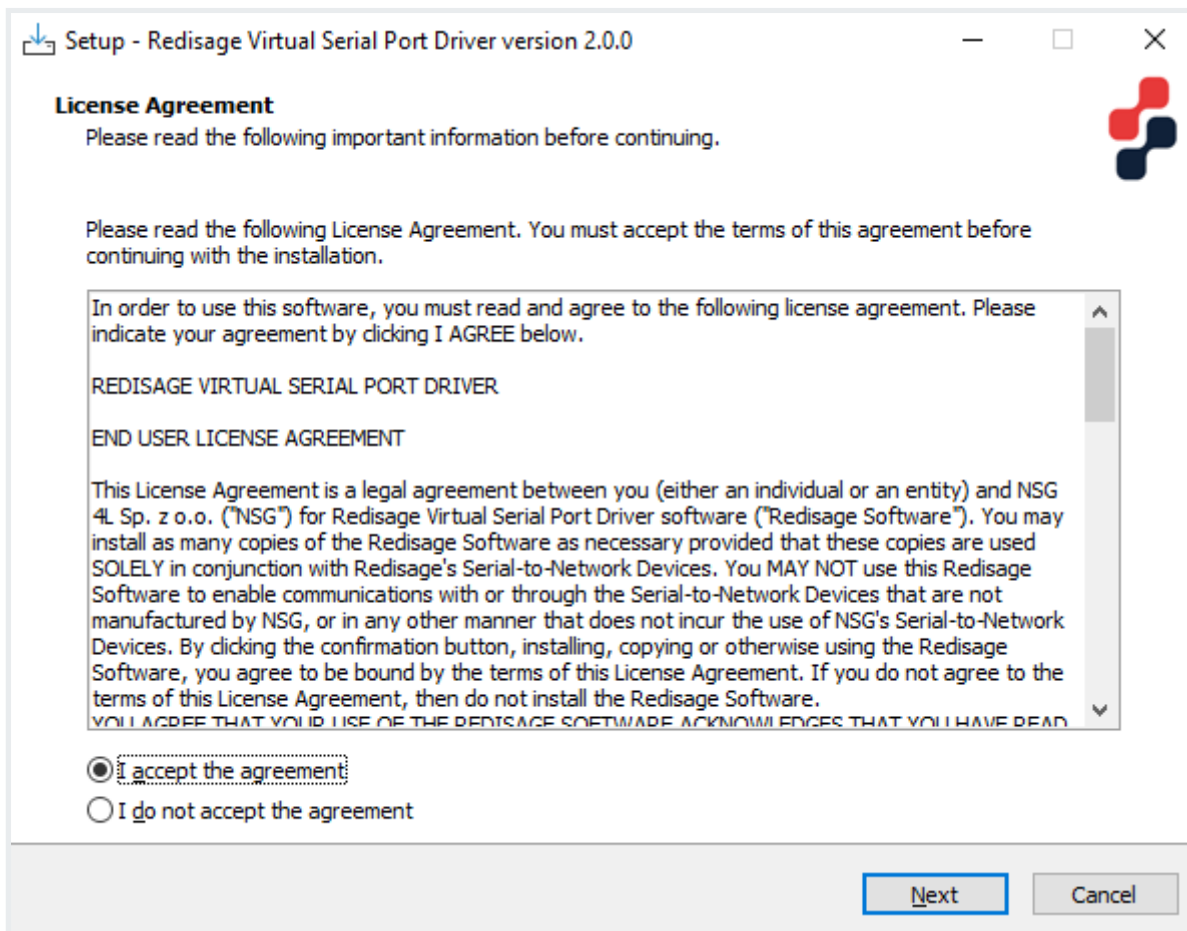
Notes

Cancel OK

2024 © Redisage Electronics. All rights reserved. [Software Licenses](#) →

Redisage VSP Driver

In order for Redisage Configurator to work properly, it is necessary to install the Redisage VSP Driver. It can be done with RedisageVSPDriver.Installer available for Windows.



Redisage Configurator

When the device is configured open the Redisage Configurator app.

The screenshot shows the 'Redisage Configurator' application window. It has two tabs: 'Devices' and 'Settings'. The 'Settings' tab is active, showing configuration for a device named 'COM20'. On the left, a list of devices is shown, with 'COM20, 192.168.0.52:1536' selected. The right side of the window contains configuration fields for 'COM20': 'Service IP/Hostname' is '192.168.0.52', 'Service Port' is '1536', 'Encryption Method' is 'None (Disabled)', and 'Connection Timeout' is 'Short (3s, recommended)'. A message states: 'This device is disabled and will not start until you enable it below and save your changes.' At the bottom, there are buttons for 'Add Device...', 'Enable', 'Delete', 'Rename', and 'Save Changes'.

Device	Service IP/Hostname	Service Port	Encryption Method	Connection Timeout
COM8, 192.168.0.174:1536				
COM9, 192.168.0.174:1537				
COM20, 192.168.0.52:1536	192.168.0.52	1536	None (Disabled)	Short (3s, recommended)
COM21, 192.168.0.52:1537				
COM22, 192.168.0.52:1538				
COM23, 192.168.0.52:1539				
COM40, 192.168.0.214:1500				
COM41, 192.168.0.214:1501				
COM50, 192.168.0.213:1536				
COM51, 192.168.0.213:1537				

COM20

Service IP/Hostname: 192.168.0.52 Service Port: 1536

Encryption Method: None (Disabled) Password:

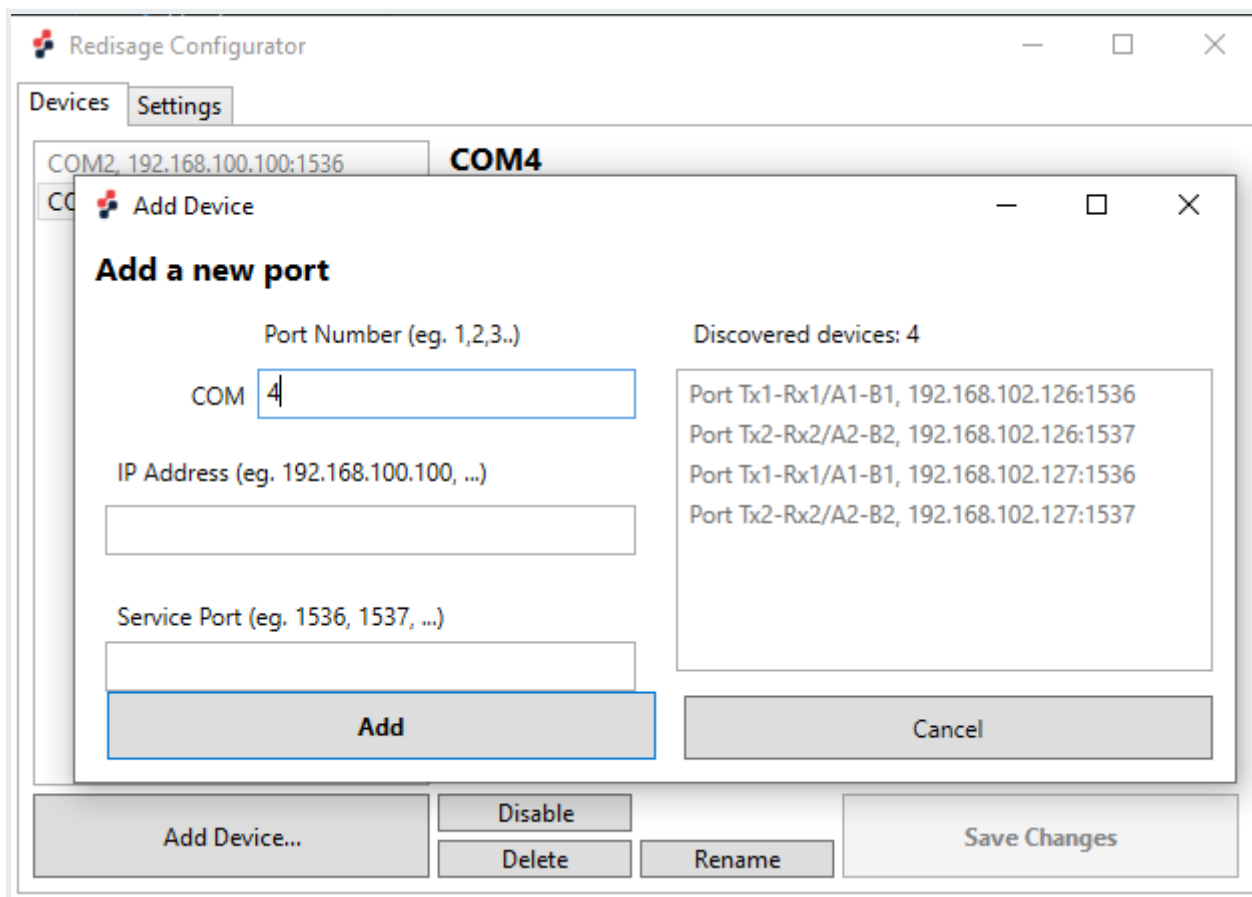
Connection Timeout: Short (3s, recommended)

This device is disabled and will not start until you enable it below and save your changes.

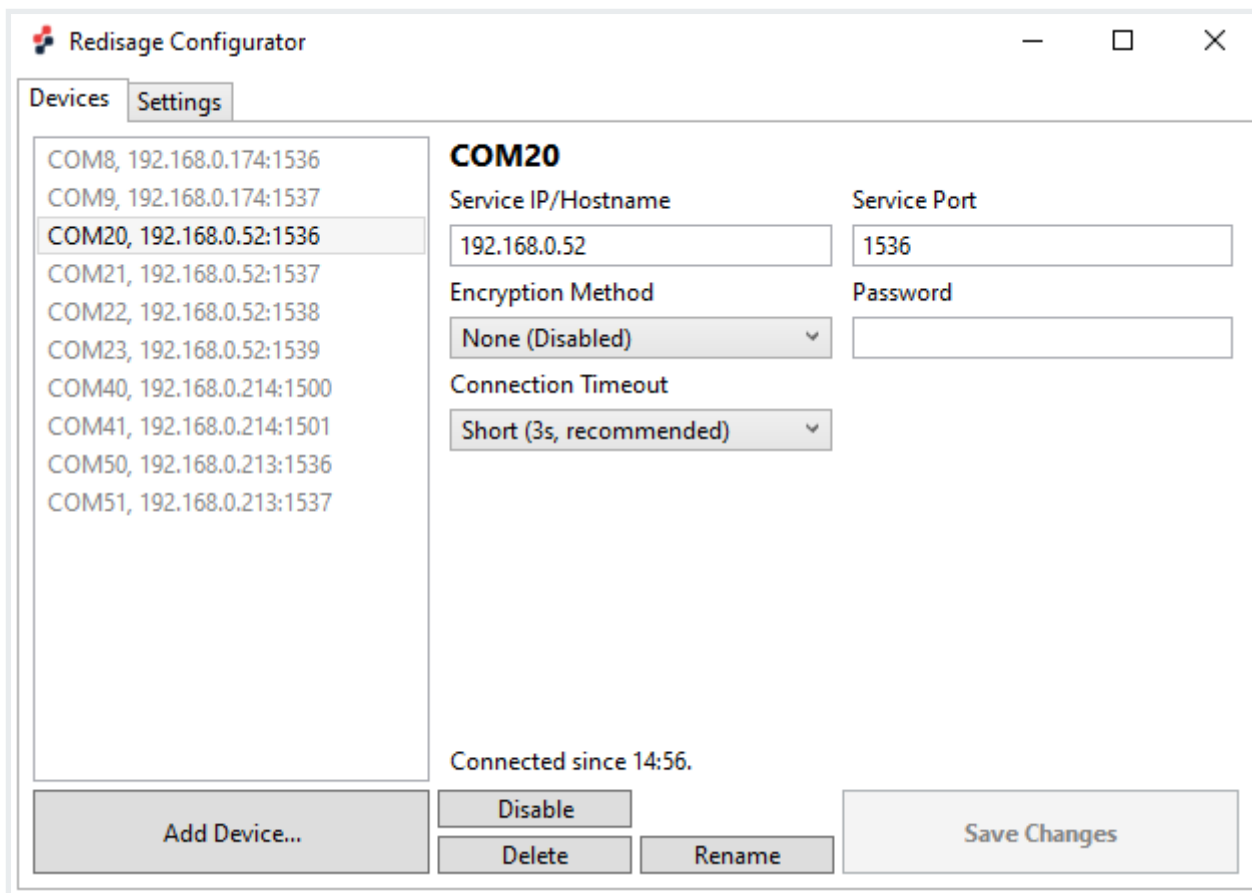
Buttons: Add Device... Enable Delete Rename Save Changes

Use the “Add Device” button to set up a new connection with a device. On the right side there should be a list of available devices visible. Choose one of them or specify a custom COM port number, an IP address and a service port number.

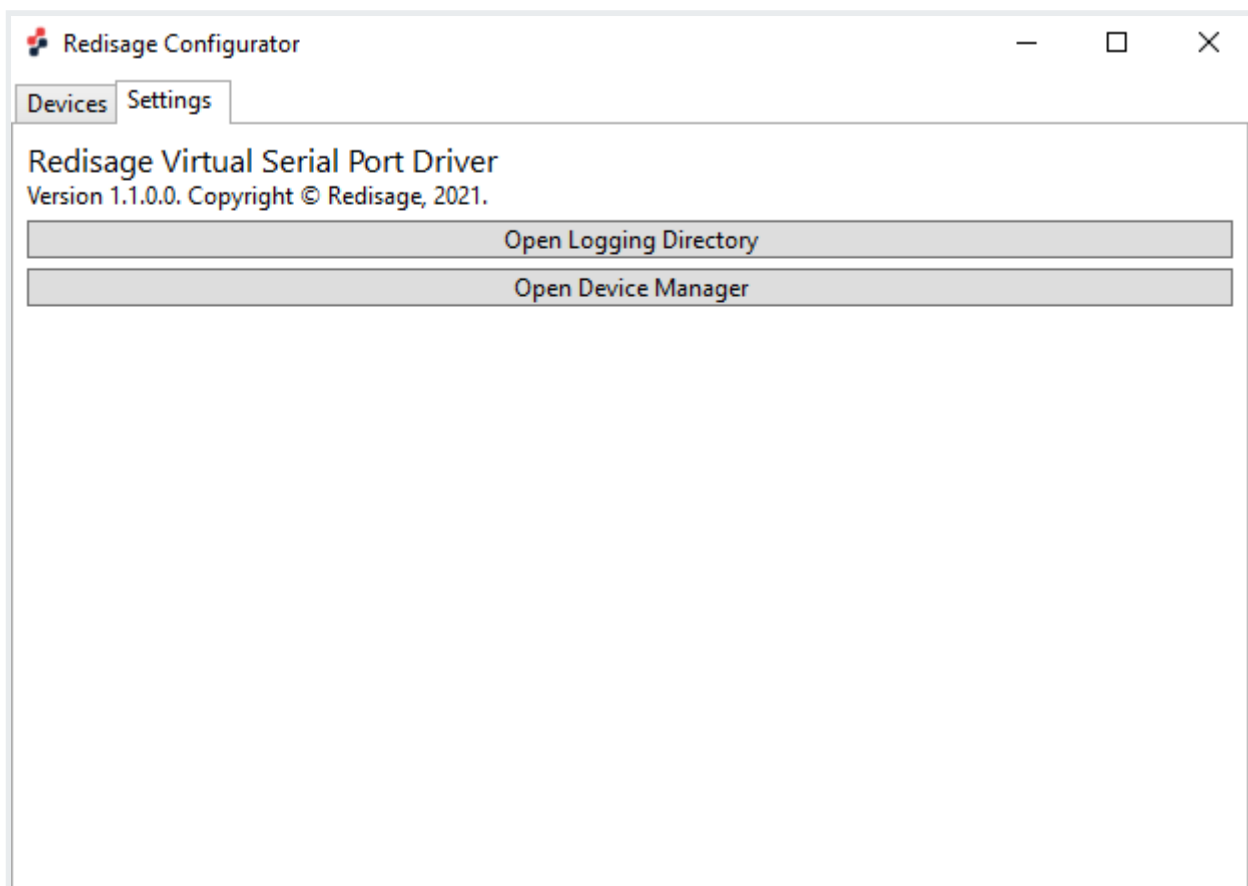
While specifying a custom virtual COM make sure to use the same IP address and service port as set earlier in the port configuration.



In order to establish a connection with a desired device use the “Enable” button. To end the connection use the “Disable” button. Service IP/hostname, service port and password can be modified at any time. There are also available 2 options of the encryption methods (none (disabled) or strong (AES-GCM 128-bit, Argon2)) and 5 options of the connection timeout (brief, short, fair, modest or lengthy). Changes have to be saved with “Save Changes” button.



There is also the “Settings” tab at the top of the window from where the Logging Directory or the Device Manager can be opened.



If everything is connected properly there should be a new COM port available in the Device Manager. It is also possible to check it, for example, on the web page.

If any change is made to the port configuration, make sure to apply it with the “Save Changes” button.

Troubleshooting

If a discovered device cannot be added, check if it hadn't been added before with a different COM port / service port. In that case, delete previous configuration from the Redisage Configurator.

If that won't work, check if the port service was configured correctly for the RemoteCOM Service.

Revision #4

Created 25 March 2024 15:21:10

Updated 9 May 2024 07:25:09