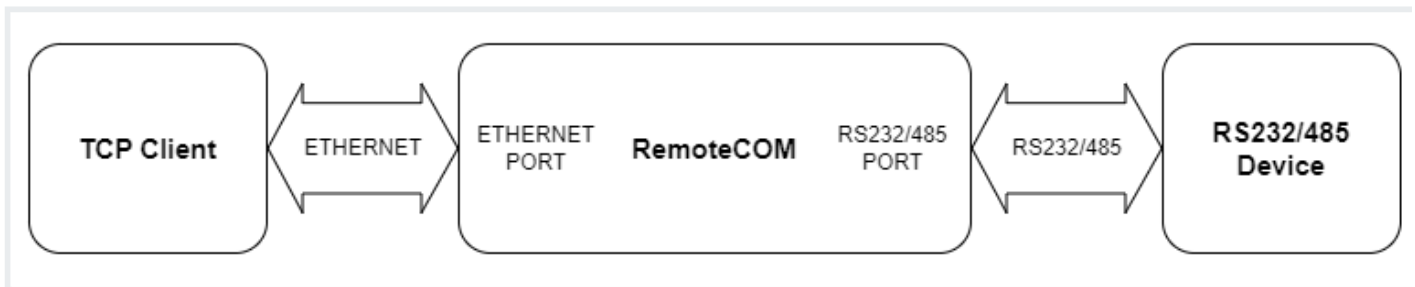


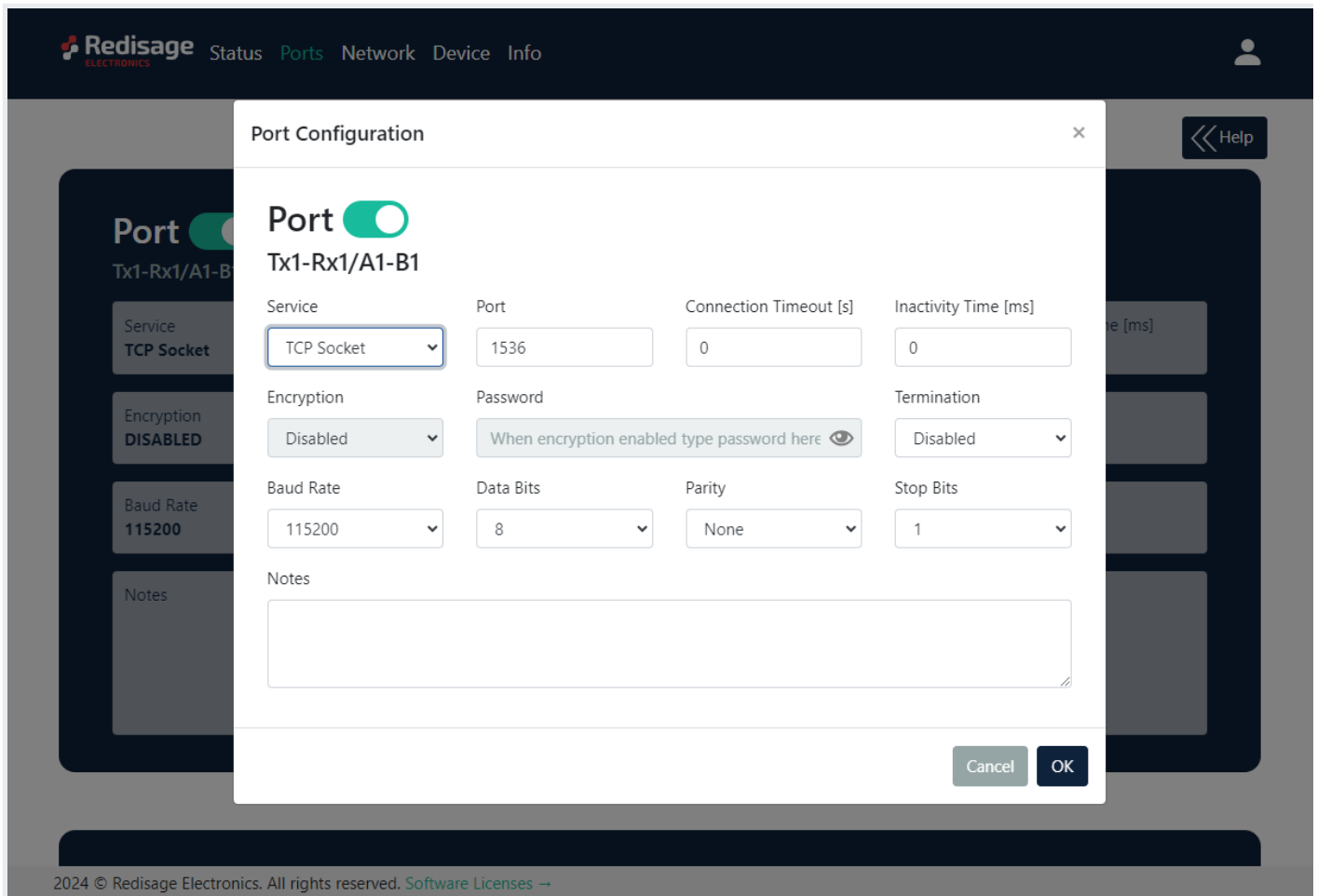
TCP Socket Mode

Serial Port Server w/ Wi-Fi (C30 - C32)

This article presents a simple instruction of a first connection between a TCP client and a RS232/485 device through the RemoteCOM Serial Port Server. Firstly, connect the RemoteCOM according to the diagram below.



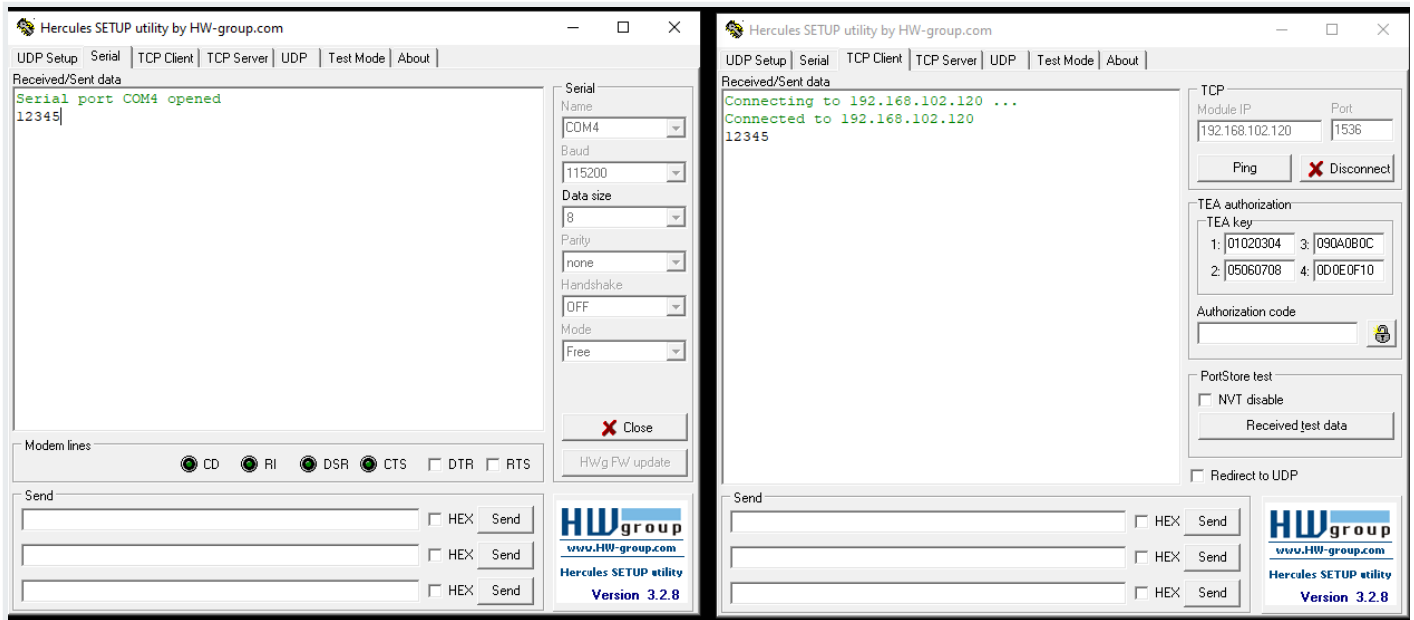
Then, it is necessary to configure the RemoteCOM's ports. It can be done, for example, via the device's web page. Ports' configuration can also be done via the Telnet, serial or service console. Set the "**TCP Socket**" option in the "Service" field on the "Port" page. Check also if the port number is set correctly in the "Port" field. Set desired options of the RS232/485 connection ("Baud Rate", "Data Bits", "Parity", "Stop Bits" - these options should be the same as in the RS232/485 device).



Now, the device should be ready to work. Once the TCP Client creates a TCP socket, the bidirectional communication should be available.

Test connection

Connection can be easily tested with a USB-RS232/485 converter and for example [Hercules Setup Utility](#) software. Connect the RemoteCOM's RS232/485 port to the USB-RS232/485 converter and plug it in to the USB port of a PC. Open Hercules Setup Utility program and go to the "Serial" page. Set serial connection options according to the previous RemoteCOM's ports configuration and open the COM port. Then, go to the "TCP Client" page and set the device's IP address and port. After a successful connection, there should be the bidirectional communication available.



Revision #2

Created 27 August 2025 13:10:12 by Michał Grabski

Updated 27 August 2025 13:14:18 by Michał Grabski